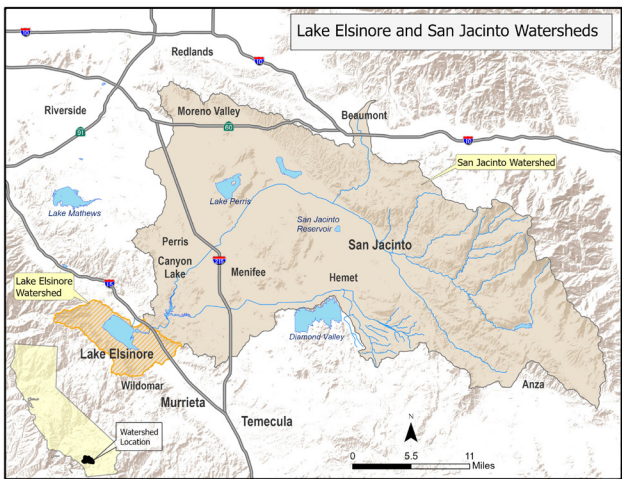


# What is a watershed?

Every body of water has a watershed. It's an area of land that drains water into a body of water. Our region has two watersheds, the Lake Elsinore Watershed and the San Jacinto Watershed.



## LAKE ELSINORE WATERSHED

Lake Elsinore is the largest natural freshwater lake in Southern California. With its own 45 square miles watershed, it is located at the lowest point within the San Jacinto River watershed of 780 sq mi at the end of the San Jacinto River.

## SAN JACINTO RIVER WATERSHED

The San Jacinto River is a 42-mile-long river in Riverside County, California. The river's headwaters are in Santa Rosa and San Jacinto Mountains National Monument. Water flows downstream and eventually ends in Lake Elsinore.

The natural flow of water through the San Jacinto Watershed carries nutrient-rich sediment into our lakes each year. The sediment carries with it high levels of nitrogen and phosphorus that hurt water quality and threaten aquatic life in Canyon Lake and Lake Elsinore.

## Lake Elsinore & San Jacinto Watersheds Authority



City of Lake Elsinore • City of Canyon Lake • County of Riverside  
Elsinore Valley Municipal Water District • Santa Ana Watershed Project Authority

951.354.4220

MyWatersheds.com

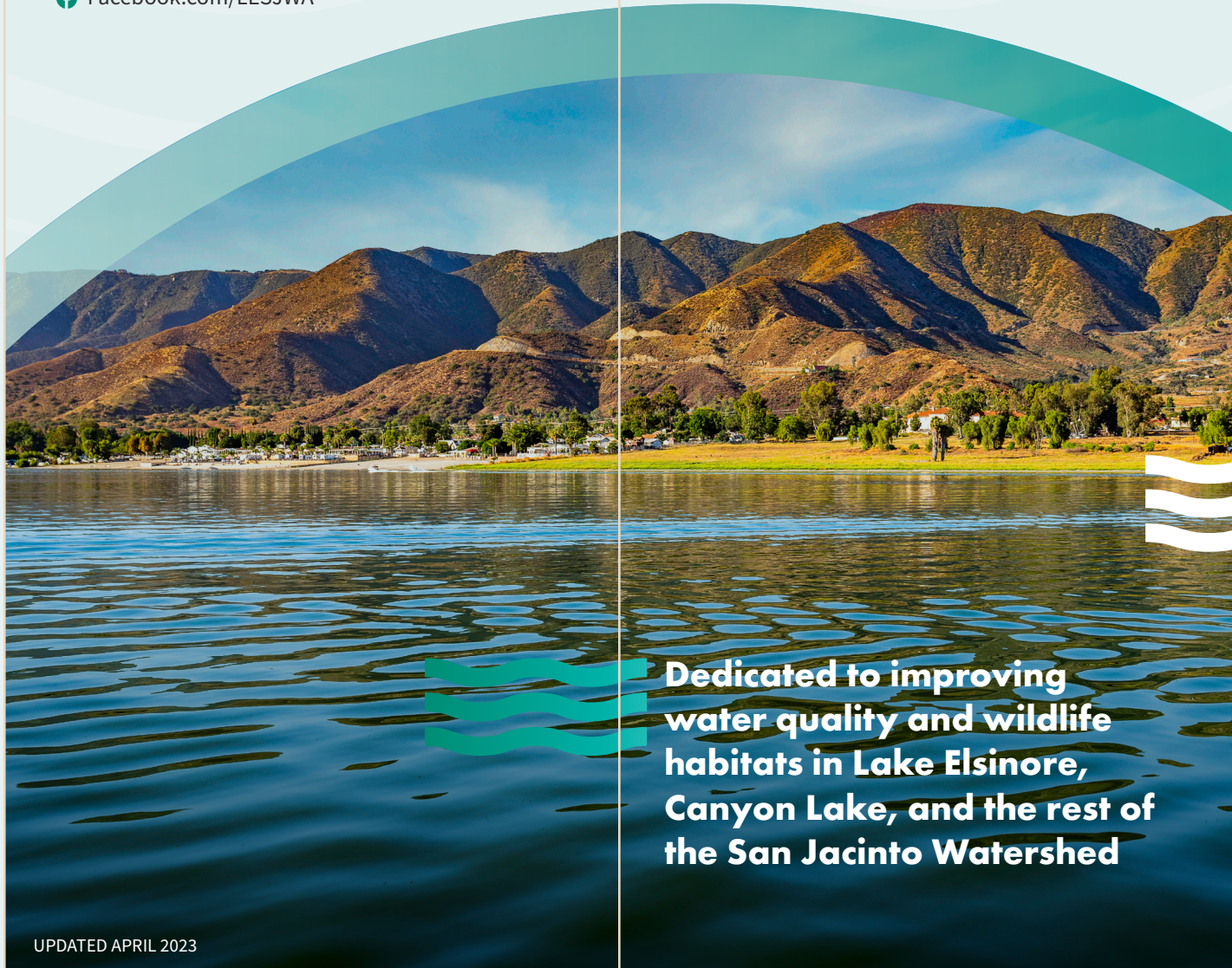
Facebook.com/LESJWA

11615 Sterling Avenue  
Riverside, CA 92503

## Lake Elsinore & San Jacinto Watersheds Authority



City of Lake Elsinore • City of Canyon Lake • County of Riverside  
Elsinore Valley Municipal Water District • Santa Ana Watershed Project Authority



Dedicated to improving water quality and wildlife habitats in Lake Elsinore, Canyon Lake, and the rest of the San Jacinto Watershed



# Lake Elsinore & San Jacinto Watersheds Authority

A joint powers authority, formed in year 2000 to improve water quality and wildlife habitats in Canyon Lake, Lake Elsinore and surrounding San Jacinto Watersheds.

The natural flow of water through the San Jacinto Watershed carries nutrient-rich sediment into our lakes each year. The sediment carries with it high levels of nitrogen and phosphorus that hurt water quality and threaten aquatic life in Canyon Lake and Lake Elsinore.



The San Jacinto Watershed, upstream of Canyon Lake and Lake Elsinore, covers 780 square miles in the Western half of Riverside County. It begins in the San Jacinto Mountains and runs west through Canyon Lake, ending in Lake Elsinore.



## LESJWA Completed Projects

Since 2000, LESJWA along with the Lake Elsinore/Canyon Lake Total Maximum Daily Load (TMDL) Task Force, has worked with scientists and

water quality experts to implement projects that achieve the goal of improving water quality and wildlife habitats in the watersheds. his goal.



### CANYON LAKE ALUM APPLICATIONS

Ongoing alum applications reduce the phosphorus levels (food for algae). Alum applications are effective in reducing algae growth, however in small coves where there is little water movement and temperatures are warm, algae blooms can still occur.



### LAKE ELSINORE FISHERY SURVEY AND MANAGEMENT PLAN

A lake fishery survey was conducted and a management plan proposed to develop improvements to benefit the fishery habitats and overall lake quality of Lake Elsinore.



### LAKE ELSINORE CARP REMOVAL

Removed more than 1 million pounds of carp from Lake Elsinore. Carp stir up nutrients on the lake bottom, which can cause harmful algae blooms.



### CANYON LAKE DREDGING PROJECT

Removed 20,000 cubic yards of excess sediment from Canyon Lake and improved water quality for recreational use.



### ISLAND WELLS PUMP STATION IMPROVEMENTS

Produces about 180,000 gallons per day of non-potable water that is discharged to Lake Elsinore to help stabilize the lake water level.



### LAKE ELSINORE STRIPED BASS STOCKING

Added hybrid striped bass in Lake Elsinore to help control overpopulation of small fish, mostly shad and minnows, that disrupt lake water quality.



### LAKE ELSINORE DESTRATIFICATION AND MIXING SYSTEM

Mixes lake water to increase oxygen levels, improve water quality and reduce harmful algae growth.



### RECYCLED WATER AND NUTRIENT REMOVAL AND CONVEYANCE PIPELINE

Removes excess nutrients from recycled water and brings the water to Lake Elsinore, improving water quality and helping to stabilize the lake level.



### LAKE ELSINORE HABITAT IMPROVEMENTS

Shallow water habitat improvements in the Lake Elsinore back basin wetlands area increase biodiversity and improve water quality.

Lake Elsinore & San Jacinto Watersheds Authority

